


Submittal Data

	JOB or CUSTOMER:	
	ENGINEER:	
	CONTRACTOR:	
	SUBMITTED BY:	DATE:
	APPROVED BY:	DATE:
	ORDER NO:	DATE:
	SPECIFICATION REF:	

QUANTITY	TAG NO.	MODEL NO.	GPM	FEET	LEAD LENGTH	COMMENTS

Technical Data

Motor Type: Water-Filled, variable speed submersible

Maximum Fluid Temperature: 86° F (30° C)

Minimum Fluid Temperature: 34° F (1° C)

Maximum Input Power: 1.5 KW (2HP)

Maximum Motor Voltage: 3PH X 220 Volts at 400Hz

Maximum Motor Current: 5.5 Amps

Discharge Size: 1/2 Female NPT

Flow Range: Continuous / Variable (100ml/min. - 9 U.S. GPM)

Motor Protection: Thermal Overload

Thermik Geratebau, Series SY6

Disconnect Temperature: 176° F (80° C)

Rate Current: 5 Amps

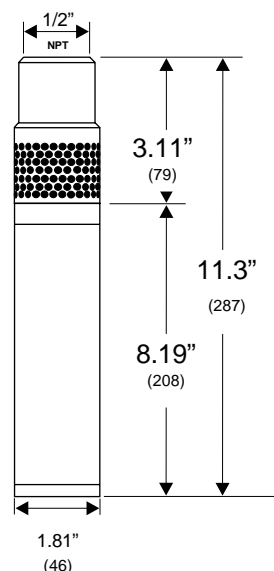
Current Overload: Incorporated into MP1 Converter

Installation: Unit to be installed vertically for submerged operation.

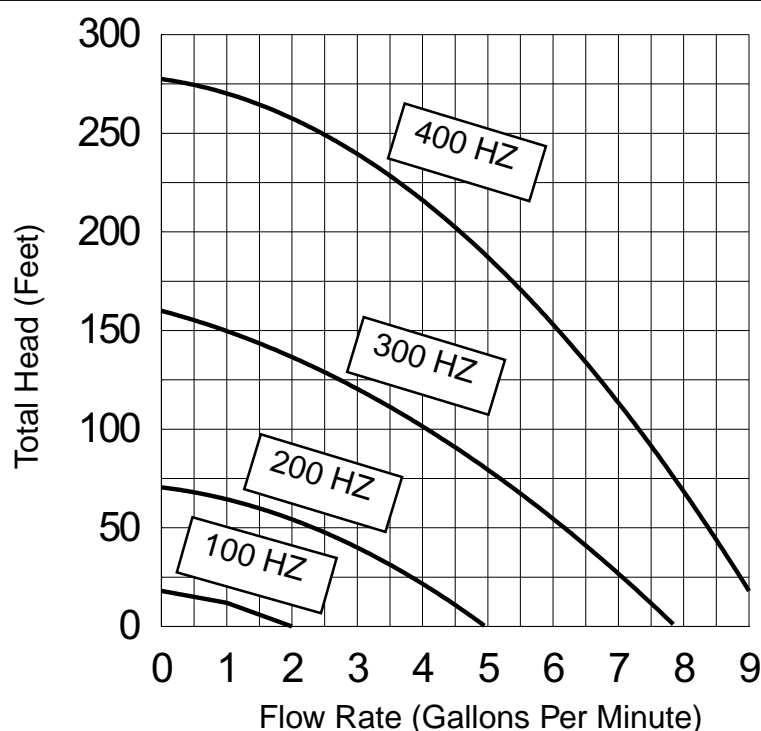
Standard Lead Lengths: 50, 75, 100, 150, 175, 200, 250, and 300 Ft.

Custom Lengths: 25-300 feet in 1 foot increments.

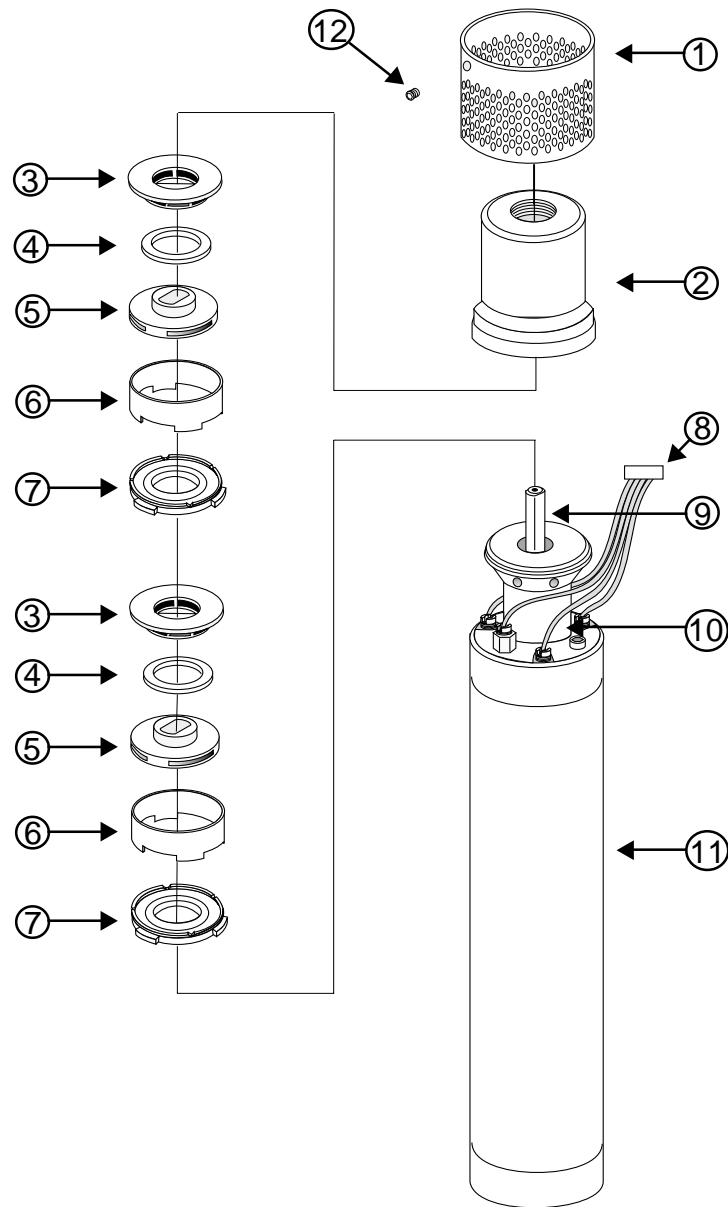
Dimensions (inches/mm)



Net Weight: 5.5LBS.
(Not including motor lead)



MP-1 Materials of Construction



Position Number	Description	Material
1	Inlet Screen	316 Stainless Steel
2	Pump Housing	316 Stainless Steel
3	Guide Vane	316 Stainless Steel
4	Wear Ring	Teflon [®]
5	Impeller	316 Stainless Steel
6	Spacer Ring	316 Stainless Steel
7	Wear Plate	Teflon [®]
8	Motor Lead	Teflon [®]
9	Shaft	329 Stainless Steel
10	Suction Interconnector	316 Stainless Steel
11	Stator Housing	316 Stainless Steel
12	Allen Screw	18-8 Stainless Steel

Specifications subject to change w/o notice

Teflon[®] is a registered trademark of Du Pont

GRUNDFOS
Leaders in Pump Technology

For further information contact:
Environmental Equipment & Supply
Fax: (717) 901-8114 Tel: (800) 739-7706 (717) 901-8891
491L Blue Eagle Ave. Harrisburg, PA 17112
Web: www.envisupply.com E-mail: sales@envisupply.com

